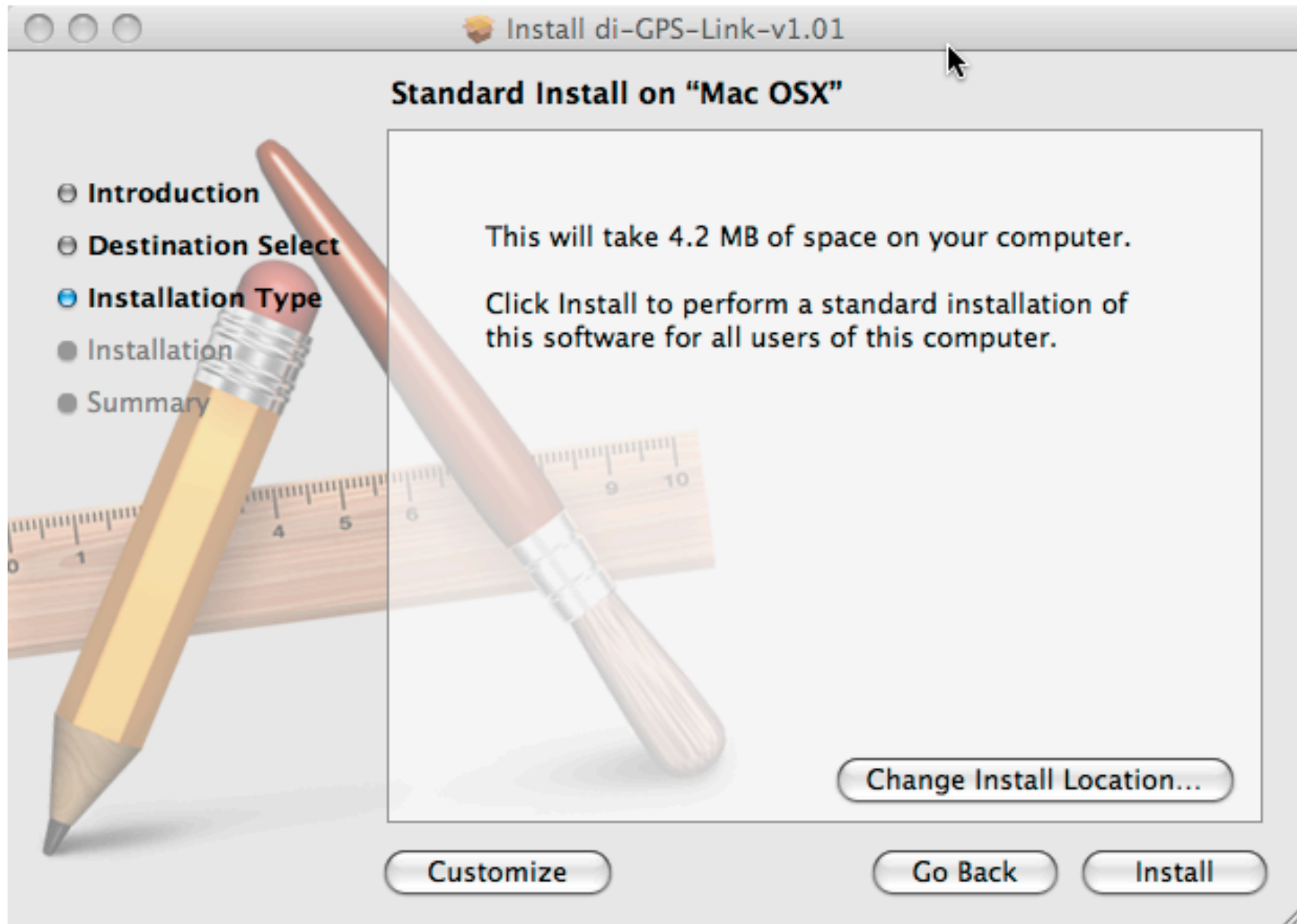
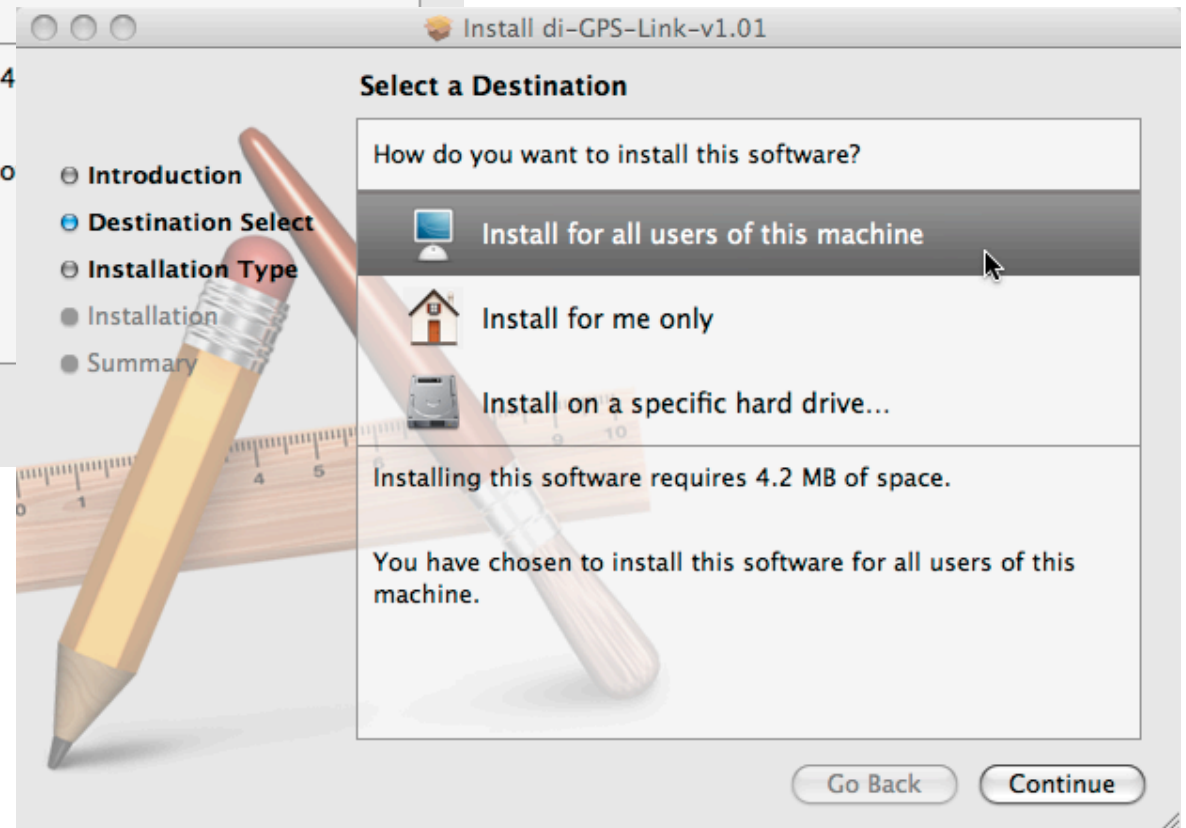
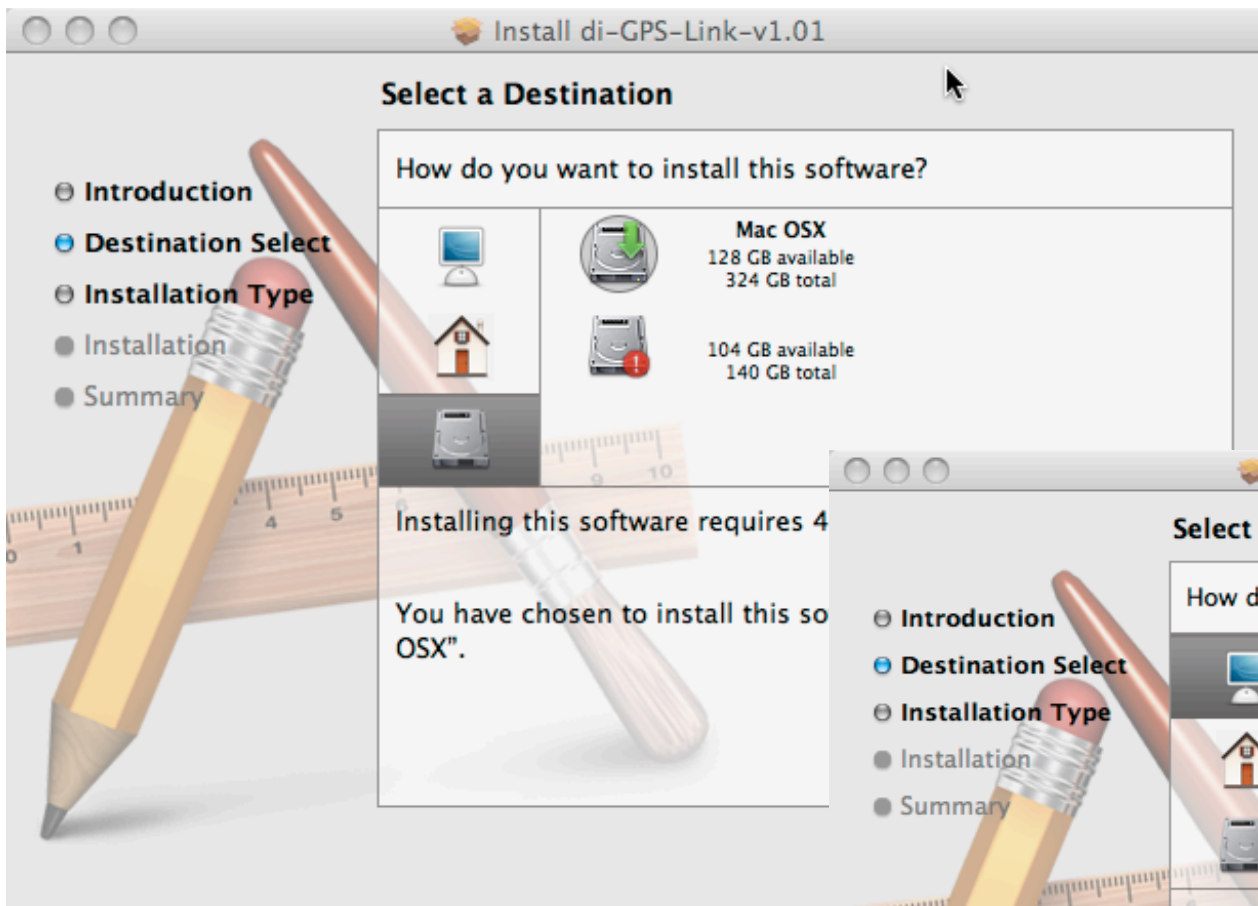


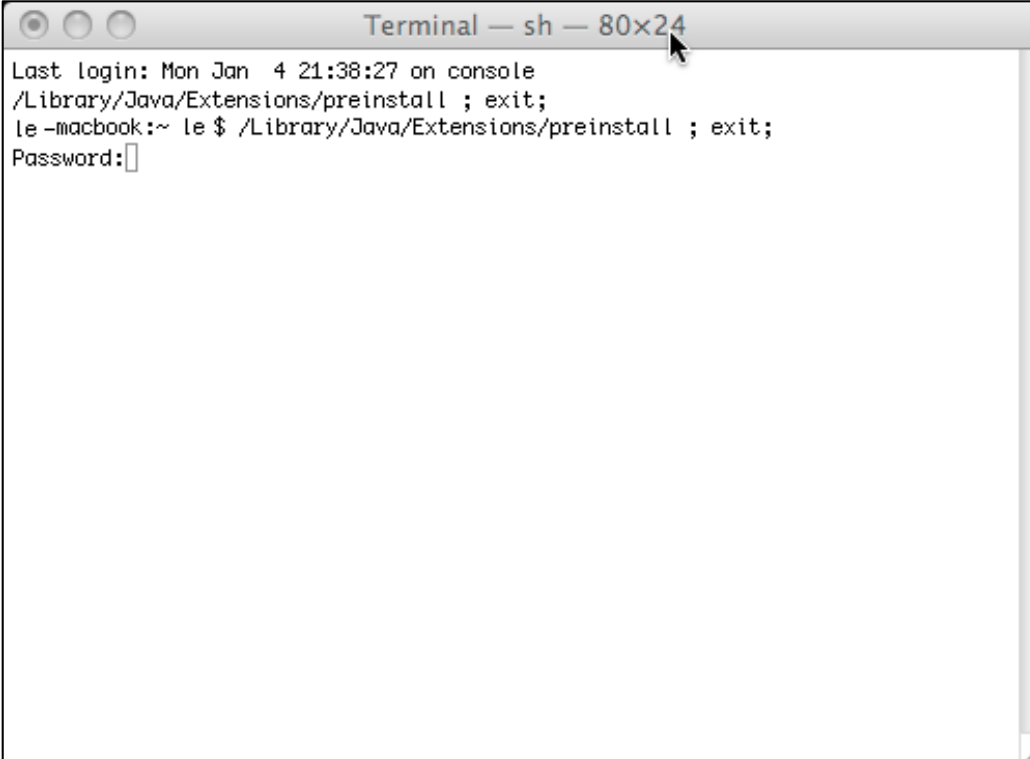
Click on "Continue" to start the Installation



Click on "Change Install Location" to select the destination

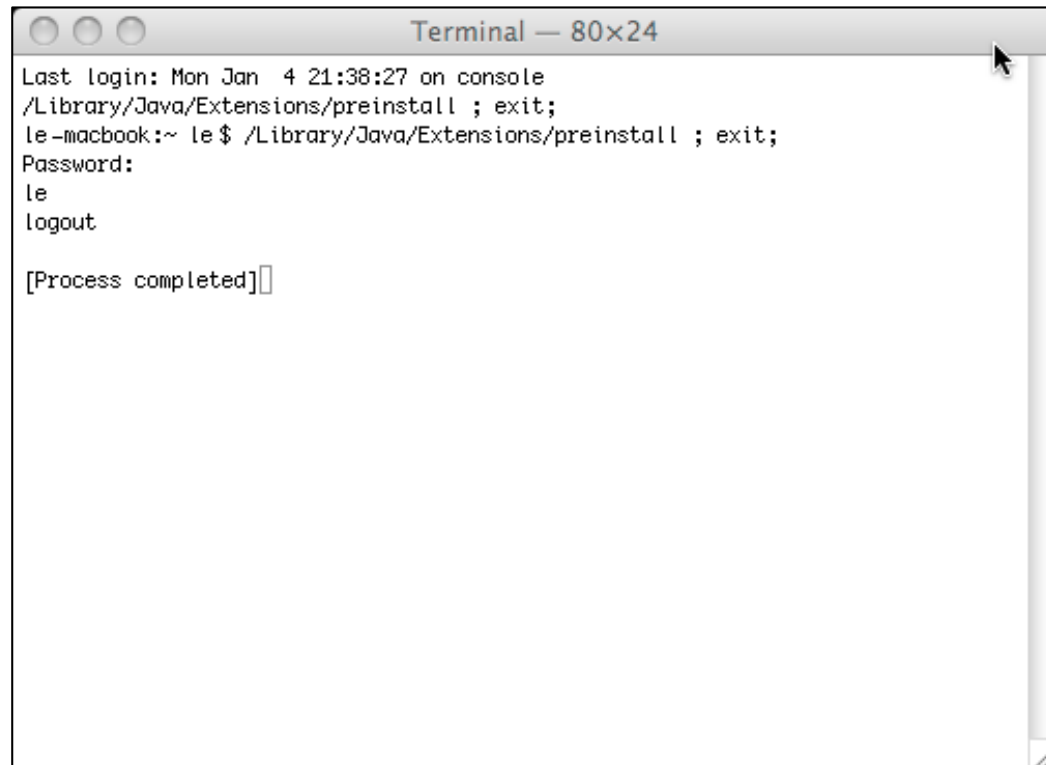


Select install for all users or Mac OSX partition

A screenshot of a macOS Terminal window. The title bar reads "Terminal — sh — 80x24". The terminal content shows a login sequence: "Last login: Mon Jan 4 21:38:27 on console", followed by the command "/Library/Java/Extensions/preinstall ; exit;" being executed. The prompt "le-macbook:~ le \$" is shown, followed by the command "/Library/Java/Extensions/preinstall ; exit;". The terminal is now at a "Password:" prompt with a cursor. A mouse cursor is visible over the title bar.

```
Terminal — sh — 80x24
Last login: Mon Jan 4 21:38:27 on console
/Library/Java/Extensions/preinstall ; exit;
le-macbook:~ le $ /Library/Java/Extensions/preinstall ; exit;
Password:█
```

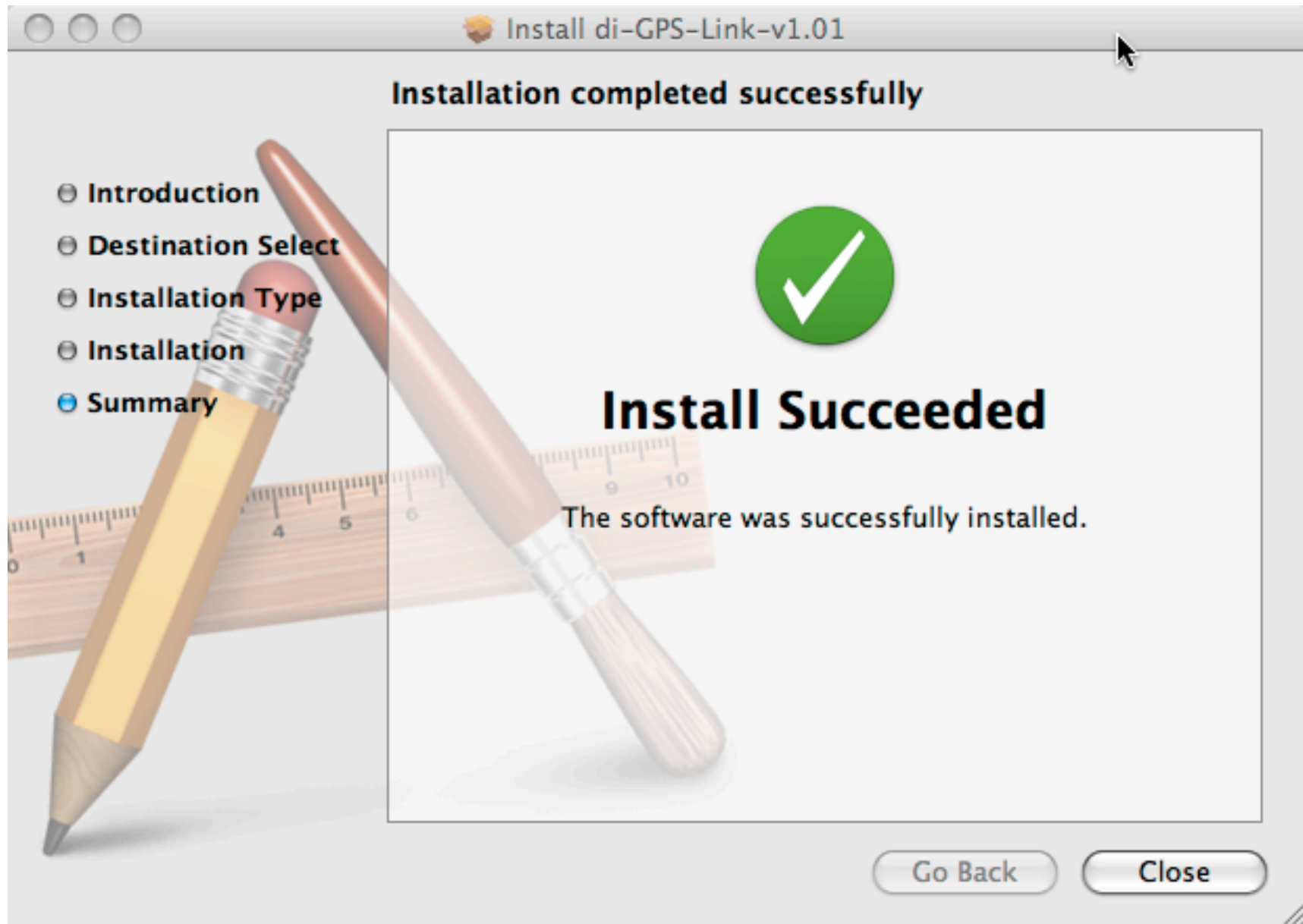
A Terminal window will bring up to ask the super user password. This process is used to create a folder in the root directory for the com port access.

A screenshot of a macOS Terminal window titled "Terminal — 80x24". The window shows the following text: "Last login: Mon Jan 4 21:38:27 on console", followed by the command "/Library/Java/Extensions/preinstall ; exit;". The prompt "le-macbook:~ le\$" is shown, followed by the command "/Library/Java/Extensions/preinstall ; exit;". The prompt "Password:" is shown, followed by the input "le". The prompt "logout" is shown, followed by the message "[Process completed]".

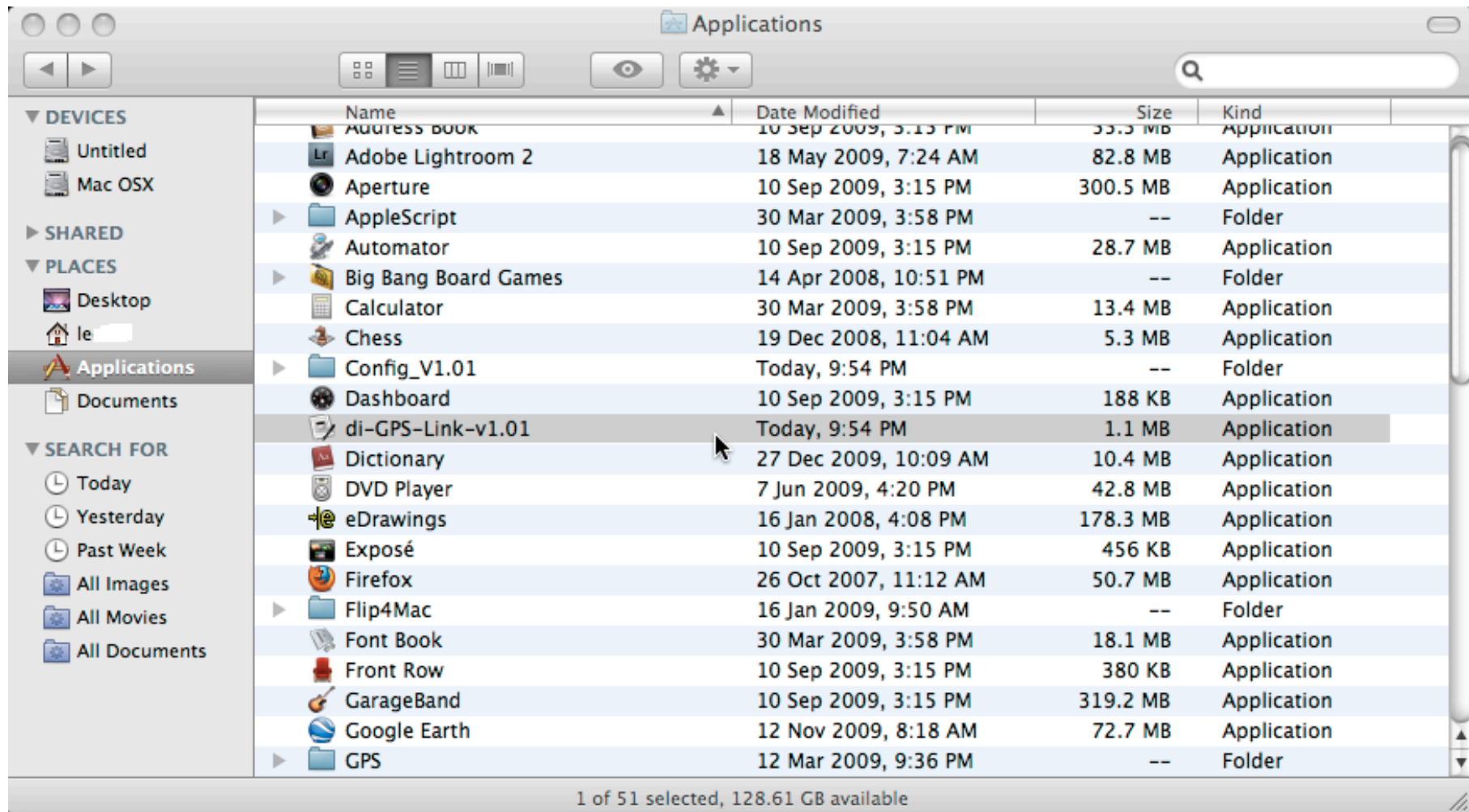
```
Terminal — 80x24
Last login: Mon Jan 4 21:38:27 on console
/Library/Java/Extensions/preinstall ; exit;
le-macbook:~ le$ /Library/Java/Extensions/preinstall ; exit;
Password:
le
logout

[Process completed]
```

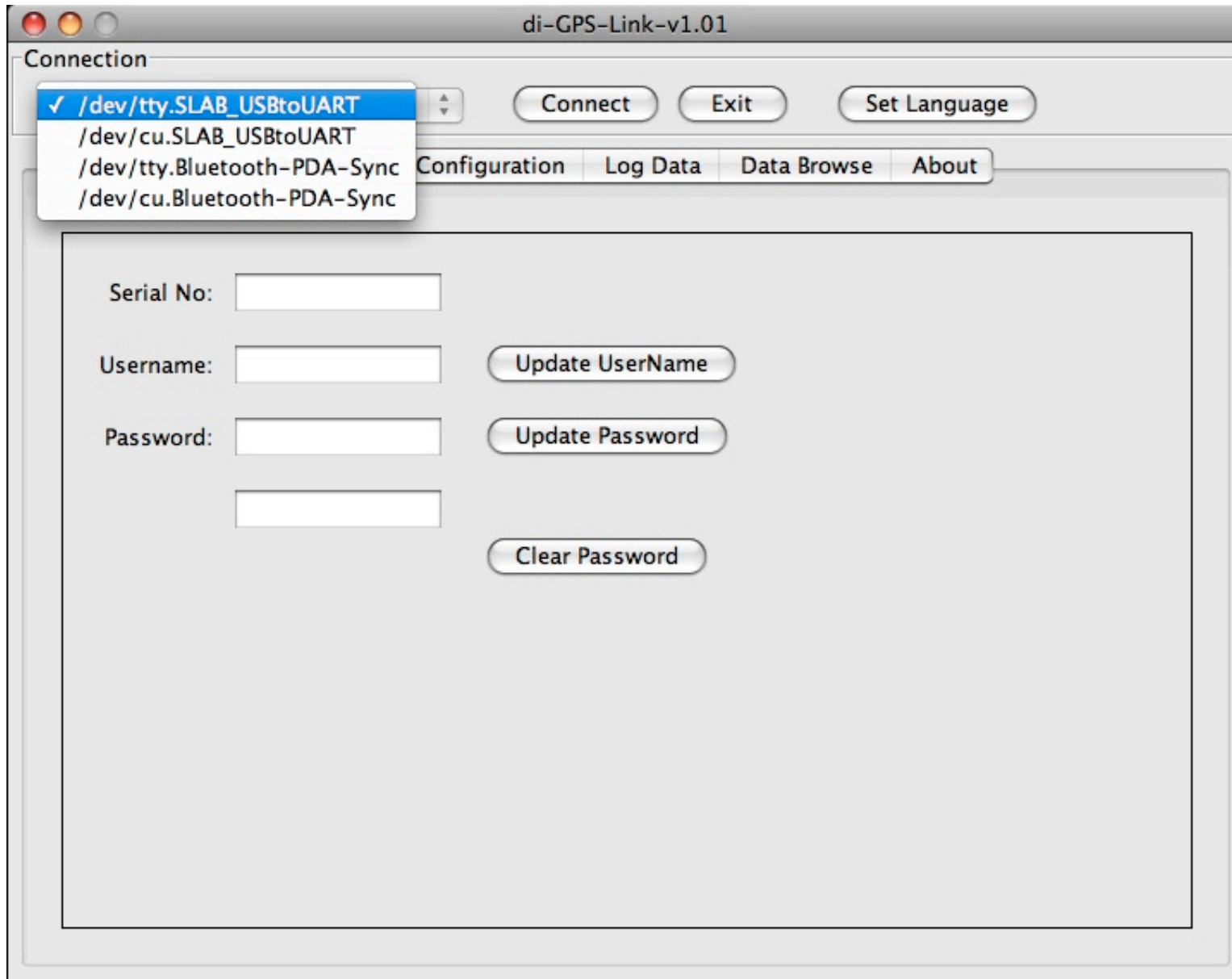
After entering authenticated password command prompt will show a “Process completed” message..



Click on "Close" to complete the installation



Click on di-GPS-Link in the Application folder to start to di-GPS-Link



If the application and the USB driver are installed correctly. A SLAB_USBtoUART device will show in the device selection list.