

GLink Utility

User Guide

Version 1.0

GLink utility is developed to provide the basic functions to access the data logger of di-GPS Pro L.

These functions include:

- Password/Username update
- Log configuration update
- Log data download and conversion

To use Glink, you will need the items below:

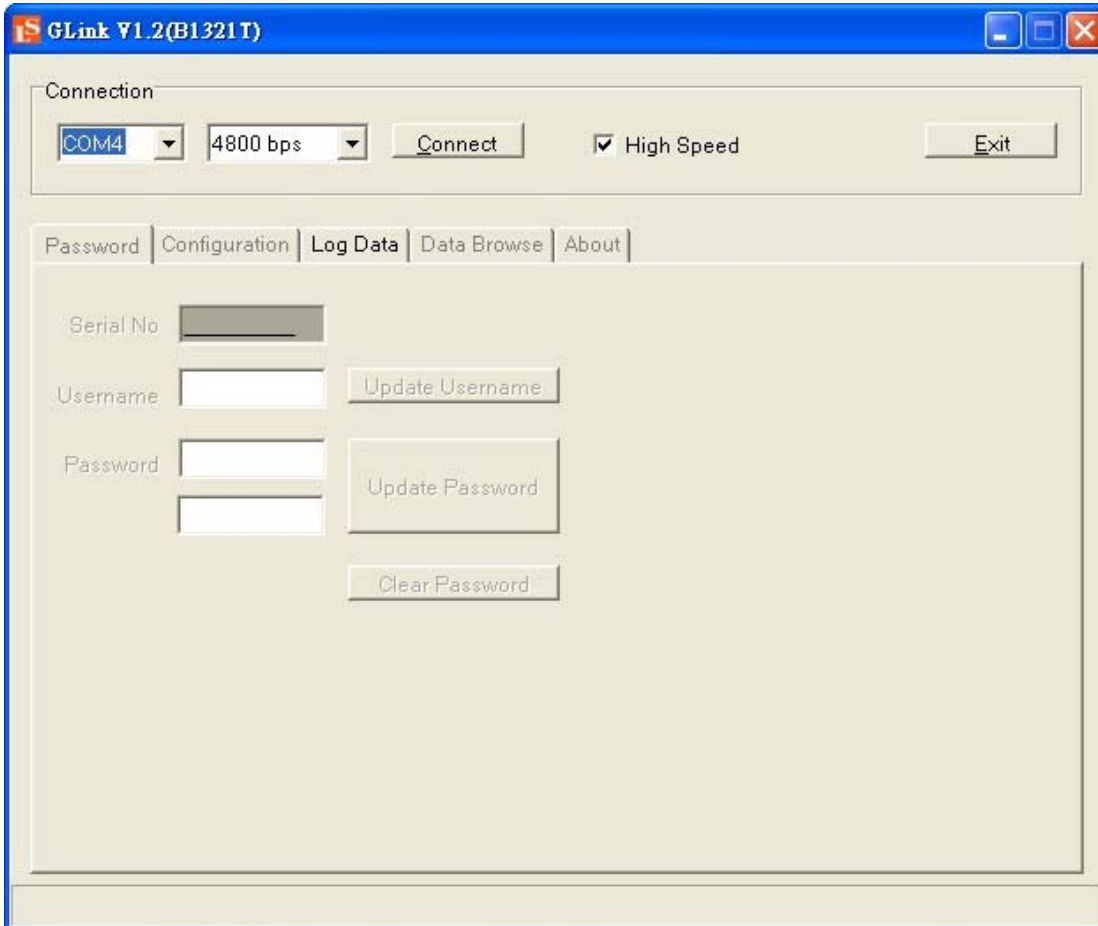
- One di-GPS Pro L/M3L unit
- One 10pin to USB cable
- One host PC/Windows with USB ports and di-GPS Pro L USB driver installed
- GLink Utility software

[Connection] Establish serial port connection and login the unit

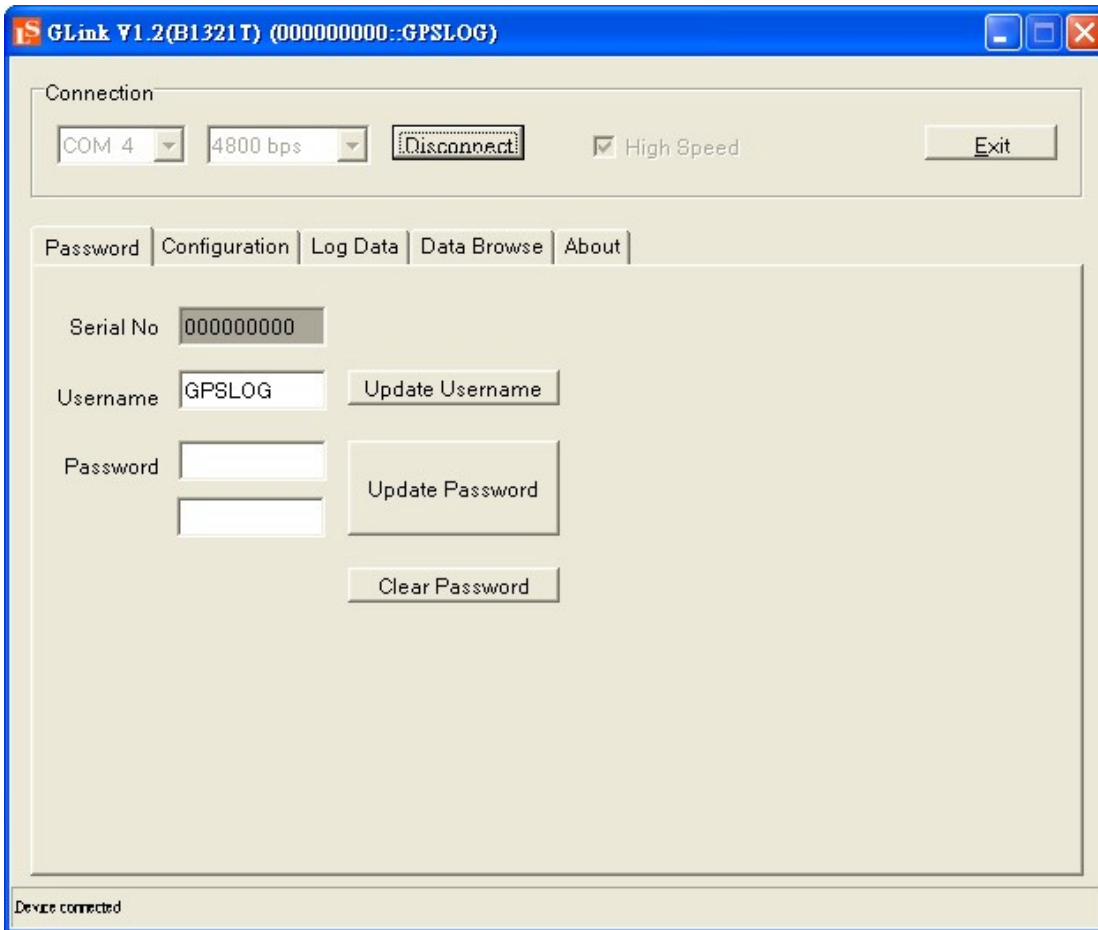
Select COM port, baud rate properly. The default baud rate for the unit is 4800 bps.

Press [Connect] button to start connection.

Once connected, the device serial number and username is displayed. Or if password is set, you will be asked to input the password. The device has null password by default.



Set communication parameters



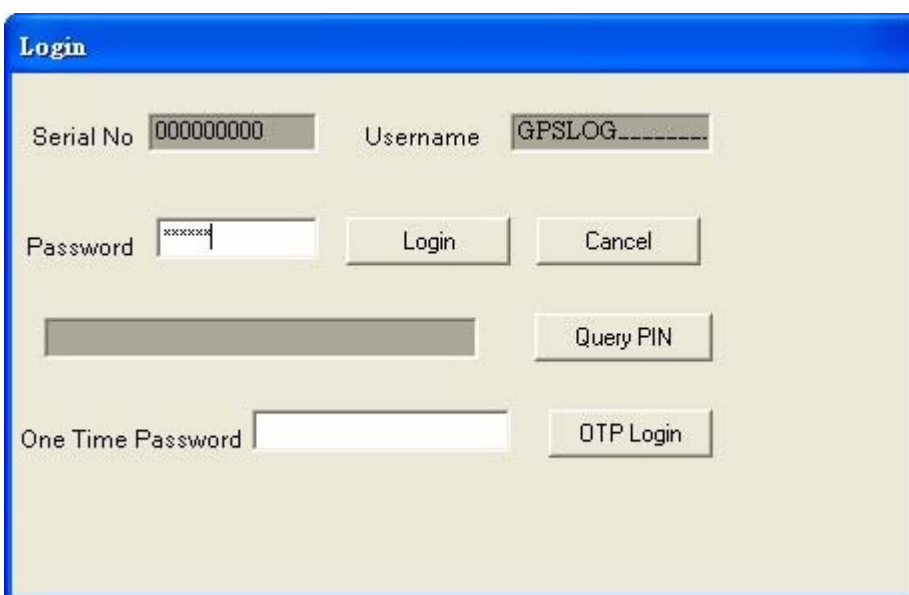
Connected with null password

Please input password and click [Login] to login the device.

Should the password for the unit is lost, click [Query PIN] to get a PIN string.

Send the PIN string to the manufacture. You will receive a OTP (One Time Password).

OTP can be used to login the unit and clear the old password.



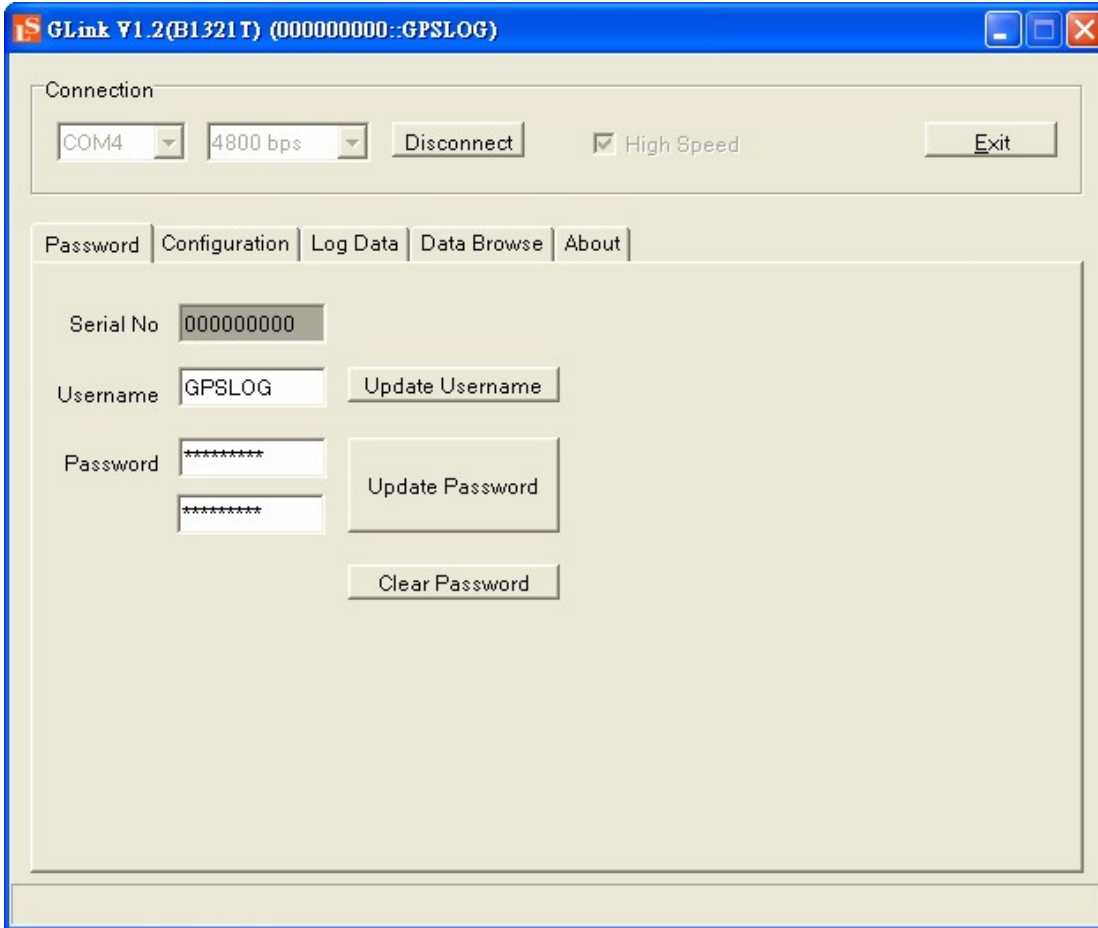
Input password or OTP to login the unit

Password Maintain username and password

Update Username: change device user name, maximum 15 characters, default GPSLOG

Update Password: the valid range is 0 to 999999999, default null

Clear Password: remove current password



Update Password

Configure Maintain device configuration

Log Mode: log data by time interval (0) or distance interval (1), default time interval (0), disable(2)

Time Interval: specify time interval to log (1..65535 seconds) if position fix is available, default 1

Distance Interval: specify distance interval to log (1..65535 meters) if position fix is available, default 32

Disable: Disable the data logger function (the last fixed log function not available in disable mode)

Cyclic Mode: overwrite the oldest point if memory full, default enabled

Minimum Speed: specify the minimum speed to log . (0:255KMH, 0:off), default off

Tag Time: specified the maximum time interval to log no matter position fix or not (0..255 seconds, 0:off), default off. (the last fixed log may not work when Tag Time turn on)

NMEA Baud: specify the NEAM output baud rate, default 4800 (**DSL R connection only work in 4800 baud rate**)

The value takes effect next time the unit restarts.

[Change]: update the configure to the unit

[Query]: read back the current configure of the unit

[Factory Reset]: set the configuration, username and password of the unit to its default values.

The screenshot shows a web interface with a navigation bar at the top containing tabs for 'Password', 'Configuration', 'Log Data', 'Data Browse', and 'About'. The 'Configuration' tab is selected. Below the navigation bar is a 'Device Settings' panel. This panel contains several configuration options:

- Log Mode: A dropdown menu set to '0 -Time Interval'.
- Time Interval(sec): A text input field containing the value '1'.
- Distance Interval(m): A text input field containing the value '32'.
- Cyclic Mode: A dropdown menu set to '1 -enabled'.
- Minimum Speed(KMH): A text input field containing the value '0'.
- Tag Time(sec): A text input field containing the value '0'.
- NMEA Baud: A dropdown menu set to '4800 bps'.

At the bottom of the 'Device Settings' panel, there are three buttons: 'Factory Reset', 'Query', and 'Change'.

[Log Data] Maintain log data

[Quick Clear] erase only sectors of flash memory of the unit with log data

[Clear Data] erase all sectors

[Download Data] download log data (in SBP format)

[Convert] convert SBP files to GPX/KML/NMEA/PLT files

[Google Earth View] check to view KML track on Google Earth automatically after SBP file conversion.

Google Earth software must be installed.

Maximum Points 260096

Points Logged 20311

Google Earth View

File Selection

C:\Documents\GLink\0000000000_GPSLOG_20090205_174934.sbp

0%

[Data Browse]

The downloaded log data (SBP format) will be listed in [Data Browse] panel.

Double click to select a point to view it on Google Maps

SBP	HDOF	SVID#	Msec	UTC	SVID	Lat	Lon	Alt
20301	4.8	3	27455	2009-02-03 07:57:27	0400	223864959	1139829197	223
20302	4.8	3	28455	2009-02-03 07:57:28	0400	223864260	1139830540	223
20303	4.8	3	29455	2009-02-03 07:57:29	0400	223864904	1139829622	223
20304	4.8	3	30455	2009-02-03 07:57:30	0400	223864713	1139830203	223
20305	4.8	3	31455	2009-02-03 07:57:31	0400	223865188	1139828953	223
20306	4.8	3	32455	2009-02-03 07:57:32	0400	223865528	1139827534	223
20307	4.8	3	33455	2009-02-03 07:57:33	0400	223868331	1139823380	223
20308	4.8	3	34455	2009-02-03 07:57:34	0400	223867594	1139824766	223
20309	4.8	3	35455	2009-02-03 07:57:35	0400	223867657	1139824699	223
20310	4.8	3	36455	2009-02-03 07:57:36	0400	223867513	1139824937	223
20311	4.8	3	37455	2009-02-03 07:57:37	0400	223867163	1139825517	223

\\GLink\0000000000_GPSLOG_20090106_235710.sbp

